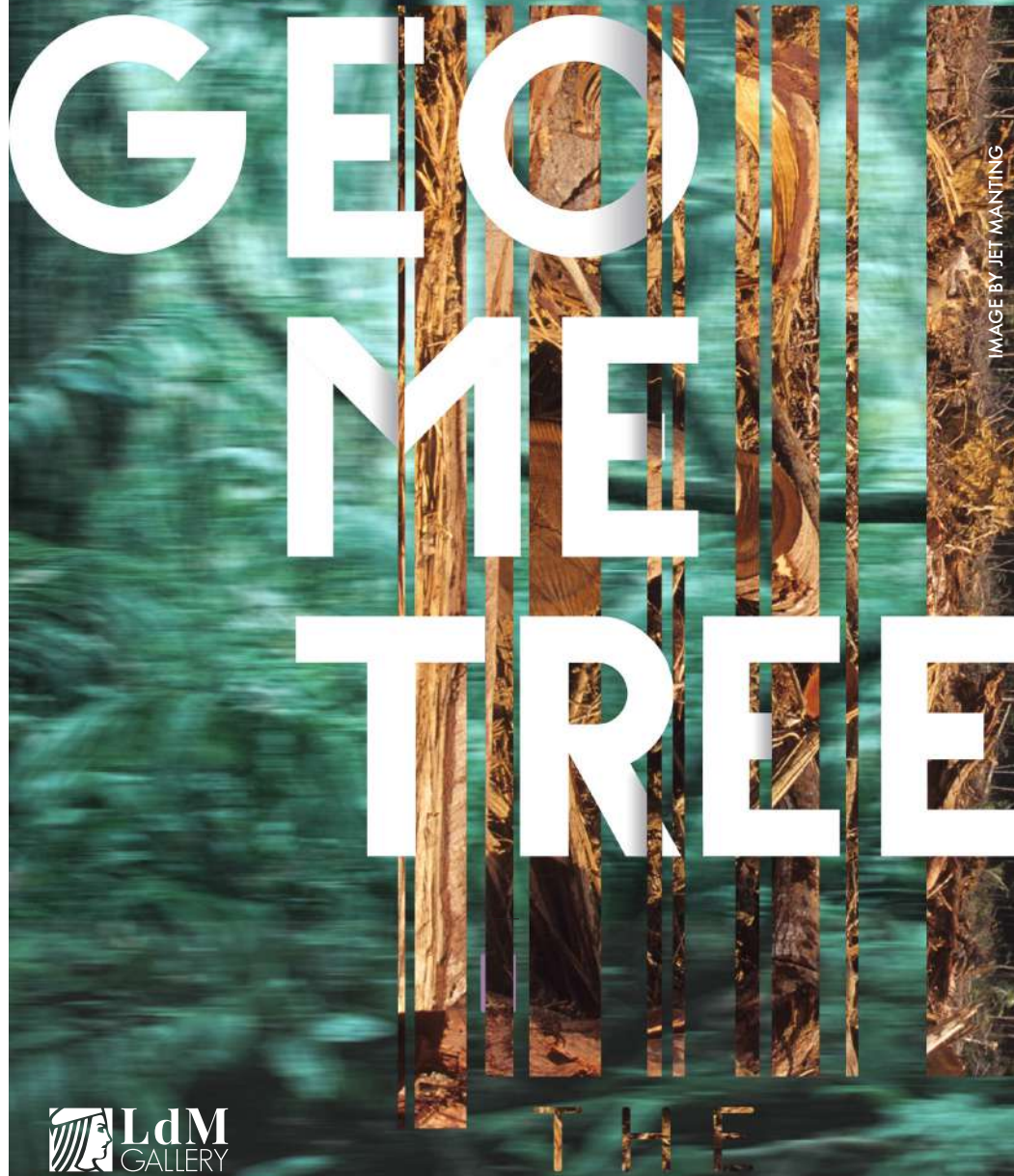


# GEOMETRIC TREE

THE



 **LdM**  
GALLERY

IMAGE BY JET WANTING

**G R A P H I C   D E S I G N   E X H I B I T I O N**

**November 20th - 28th, 2019, LdM Gallery, via Pucci 4, Florence**



# **GEO ME TREE**

*GEOMETREE* is a collection of graphic design posters, developed between Fall 2018 and Fall 2019 by Istituto Lorenzo de' Medici's Graphic Design students.

The exhibited works draw on two different class projects, "GEOMETRY" and "TRIPTIQUE", which are aimed at stimulating graphic expression, and strengthening the author's stylistic hallmark through serial production (hence the creation of triptychs). The compositions on display are a result of the artists overcoming the difficulties imposed by the constraints of the assignments (obligation to use only one geometric shape, color range limits, etc.) through a creative process intended to develop lateral thinking strategies.

The title *GEOMETREE* acts as a metaphor to the creative design process: simple, geometric forms are planted as the base of the composition, while the designers' unique style allows the draft to grow into a work of art.

The artworks have been realized on assignments and methods illustrated by Paolo Ghielmetti, Graphic Design Professor, and they have been selected by Federico Gori, professor at the Painting, Drawing and Mixed Media Department and LdM Gallery Coordinator.

# D E S I G N E R S

Alexandra Stephenson – Fall 2018 – USA – Marist College

Alexis Papadopoulos – Fall 2019 – USA – Marist College

Felipe Vieira – Fall 2019 – Brazil/Canada – University at Buffalo

Jet Manting – Fall 2019 – Netherlands – LdM Student

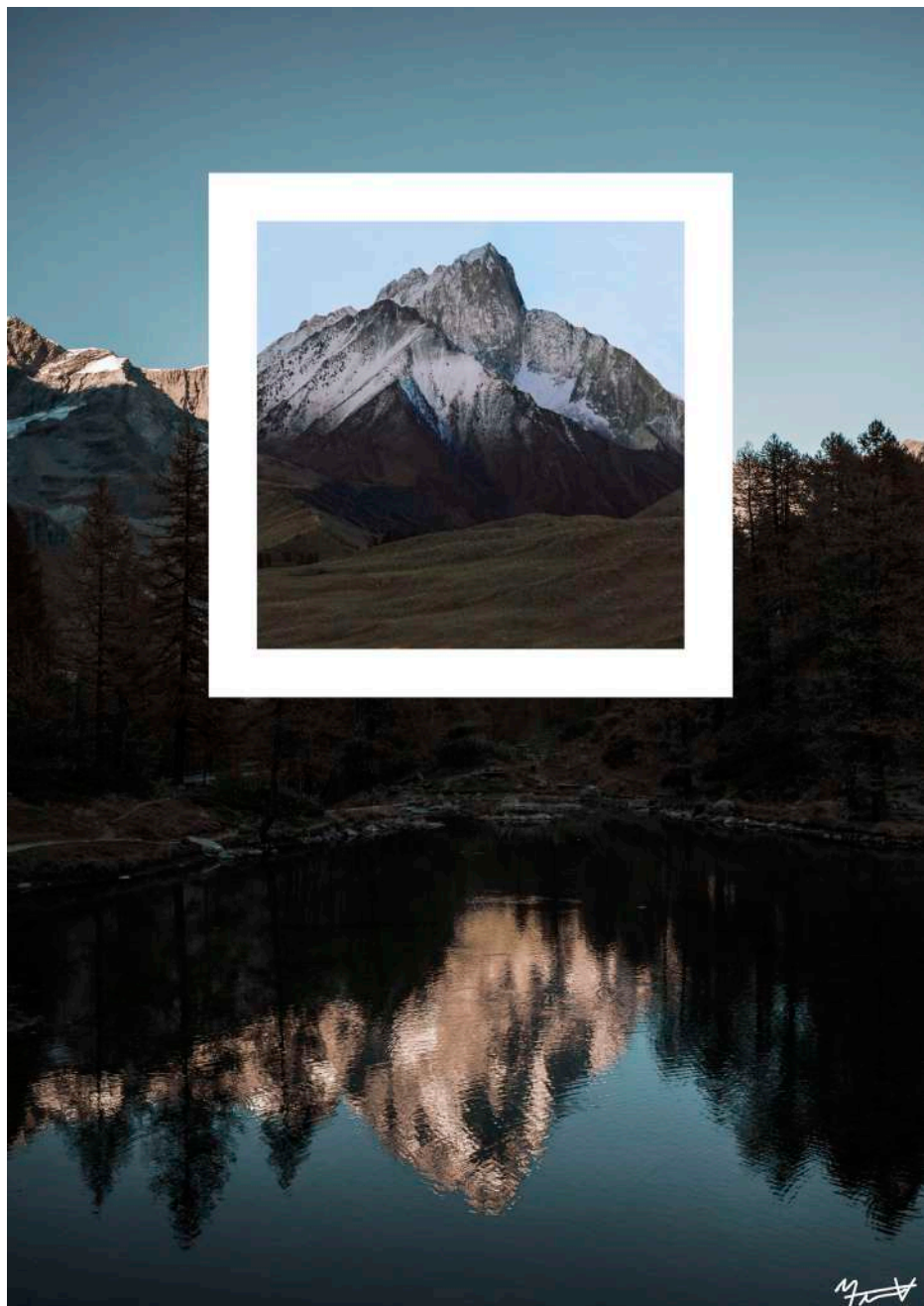
Marshal Quast – Spring 2019 – USA – University of Minnesota, Duluth

Monet Sheard – Fall 2019 – USA – Marist College

Sara Malvey – Fall 2019 – USA – Marist College

Serina Liu – Fall 2018 – USA – Carnegie Mellon University

Madeline Pastan – Fall 2019 – USA – Marist College



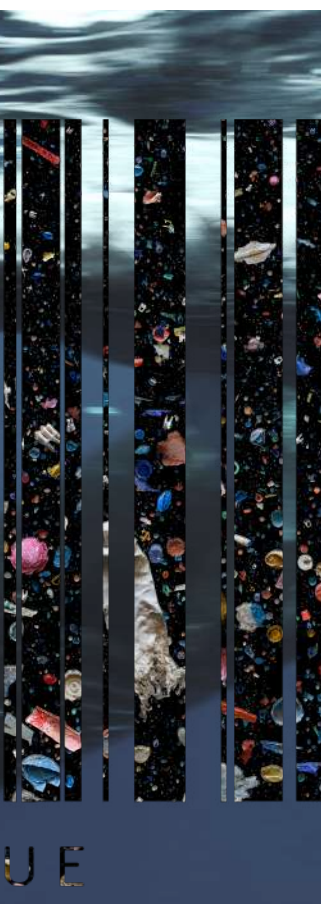




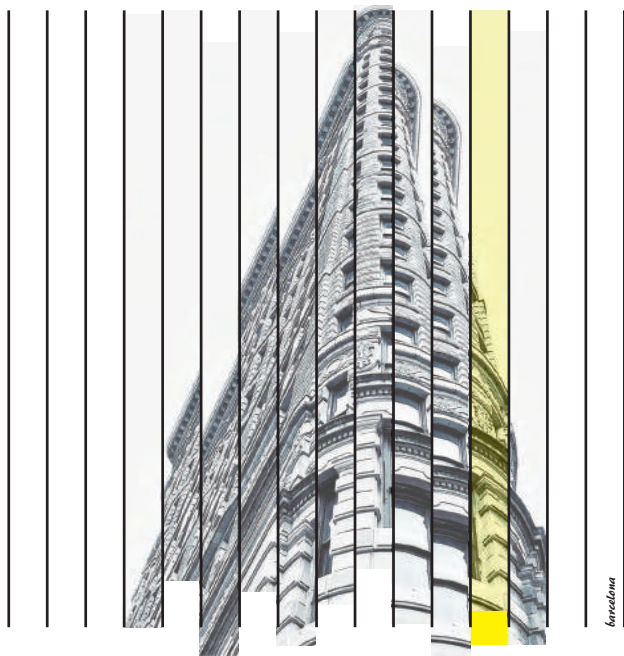






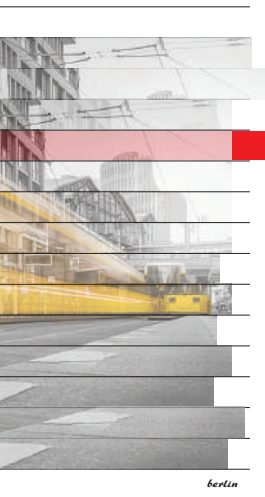


Jet Manting, THE TRUE COST, Fall 2019



i love to travel, but hate to arrive.

albert einstein



motion is tranquility.

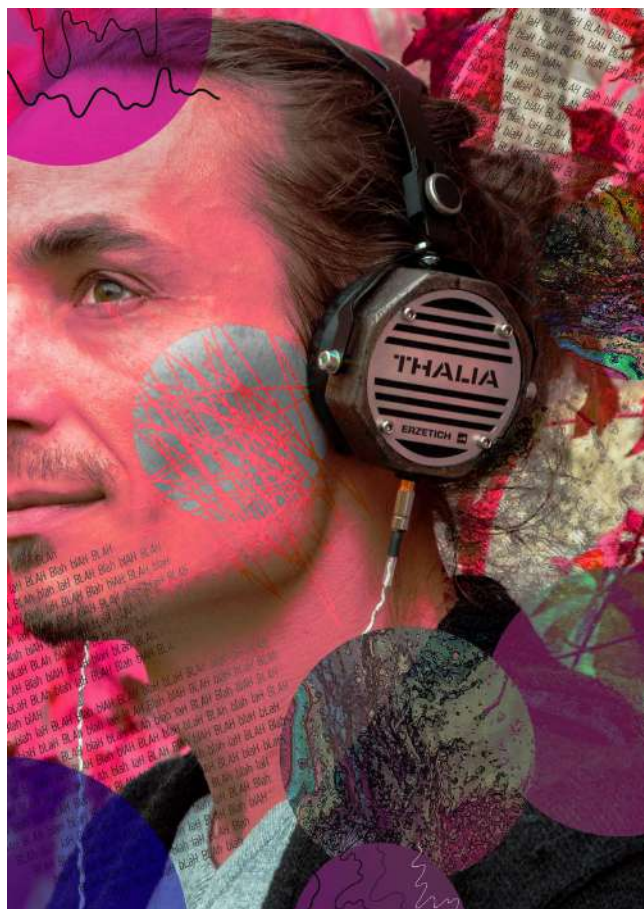
stirling moss

rome is the city of echoes, the city of illusions, and the city of yearning.  
 rome is the city of echoes, the city of illusions, and the city of yearning.  
 rome is the city of echoes, the city of illusions, and the city of yearning.

giotto di bondone

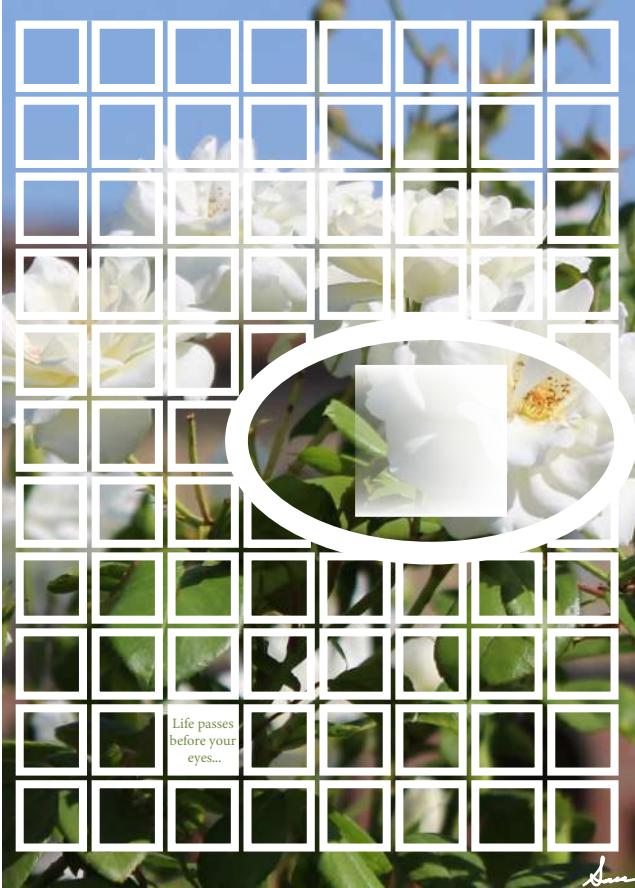
Alexandra Stephenson, BARCELONA, BERLIN, ROME, Spring 2019







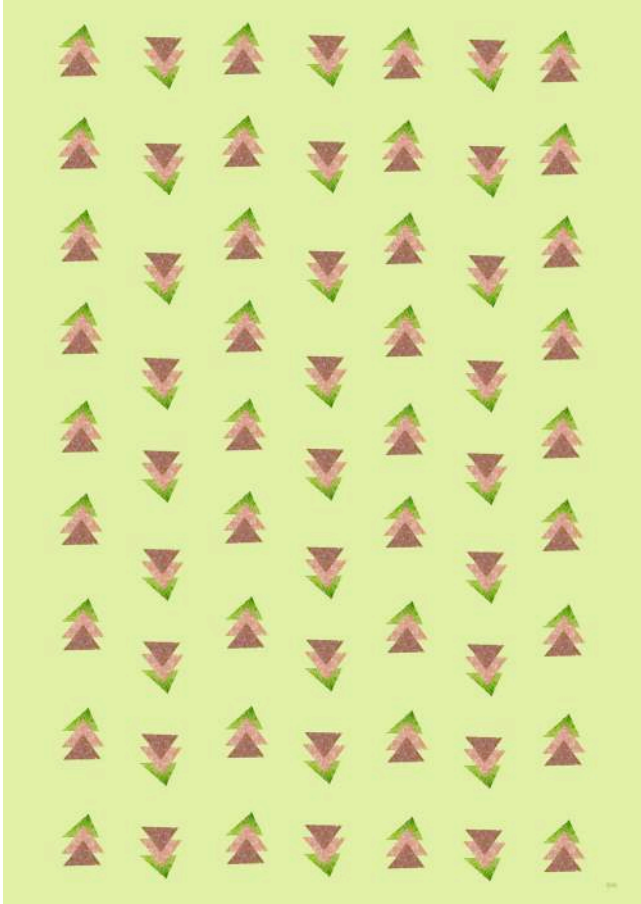
Monet Sheard, EAR, MOUTH, EYE, Fall 2019

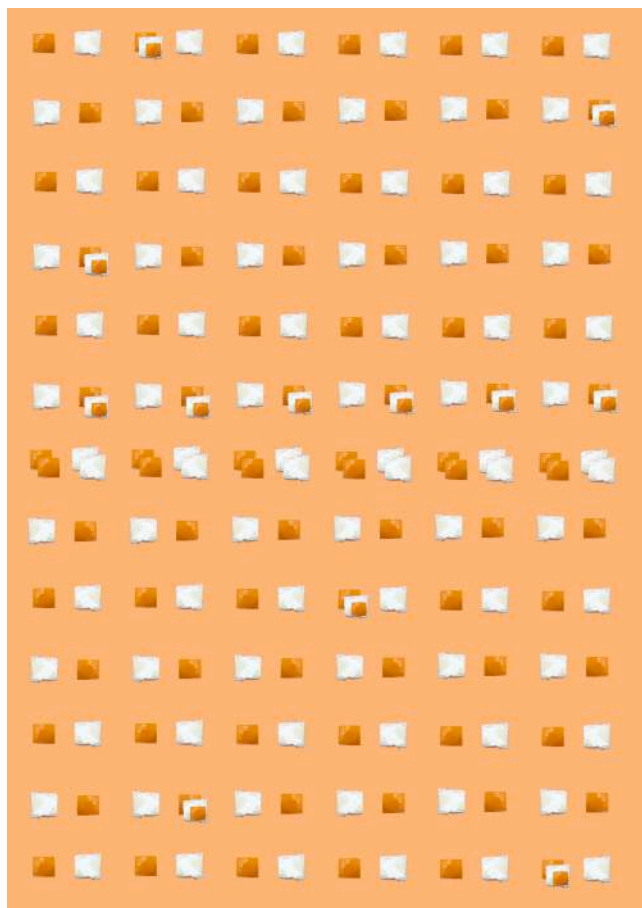






Sara Malvey, SQUARE, CIRCLE, HEXAGON, Fall 2019





Serina Liu, SALAMI, ONION, EGG, Fall 2018

**You can't connect the dots  
looking forward. You can  
only connect them looking  
BACKWARDS.**

*— Steve Jobs*





**There is no design  
without discipline. There is no  
discipline without intelligence.**

— Massimo Vignelli



**Make your life a  
MASTERPIECE. Imagine  
no limitations on what you  
can be, have, or do.**

— Brian Tracy



*Let it*

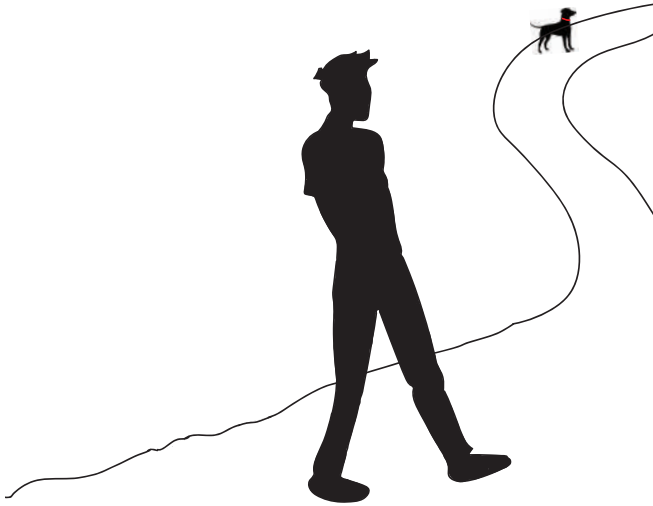


"You can't connect the dots looking forward; you can only connect them looking backwards"  
Steve Jobs

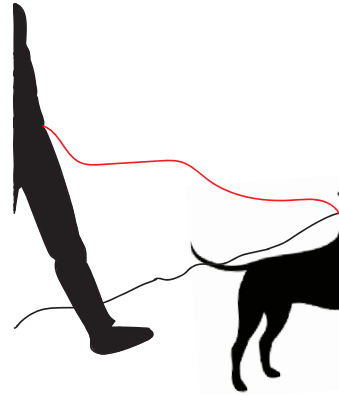


"There is no design without discipline."  
Massimo





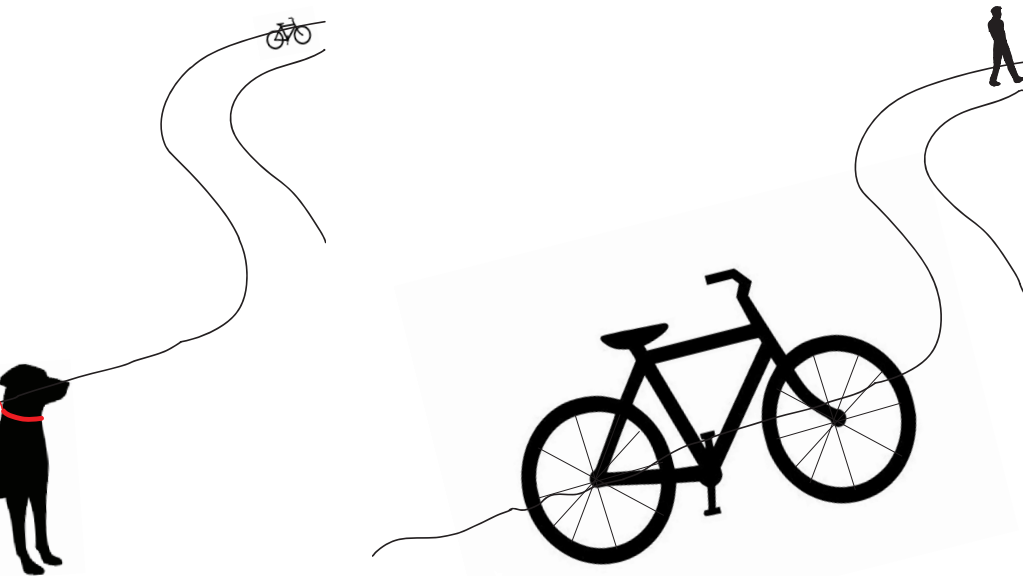
"You can't connect the dots looking forward; you can only connect them looking **backwards**."  
-Steve Jobs



"There is no design without **discipline**. There is

*Handwritten signature*



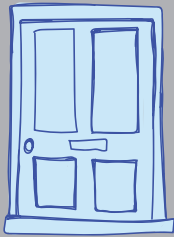
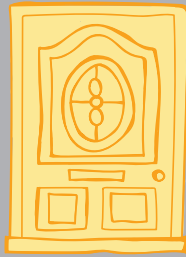


s no discipline without **intelligence.**  
-Massimo Vignelli

1/8 73 11/28

**Balance** is key. **Balance** is a virtue. **Balance**  
is next to godliness, maybe. We should all  
aspire to better **balance**.  
- Ceelo Green

1/8 73 11/28



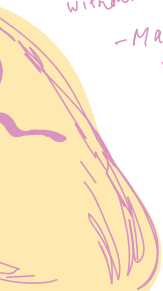
"you can't connect the dots looking forward,  
you can only connect them going backwards"  
- Steve Jobs





you can't have  
design without discipline,  
you can't have discipline  
without intelligence"

- Massimo  
Vignelli



"if you asked me  
what I came to do  
in the world, I as an  
artist will tell you:  
I am here to live out loud!"  
- Emilio Zola



**GEOMETREE** will run from **Wednesday, November 20th to Thursday, November 28th**. After the launch, the LdM Gallery will be open weekly from **Tuesday to Thursday, 5:30-7:30 PM**. For more information, please contact Istituto Lorenzo de' Medici at: **055 287360**

---

## LdM GALLERY

The LdM Gallery is a project by Istituto Lorenzo de' Medici, a space where academic research and artistic experimentation meet within a professional setting.

Founded in 1973, Istituto Lorenzo de' Medici prides itself with having core values aimed towards ensuring students achieve the skills necessary to creatively meet the challenges of their respective fields, skills accomplished through interdisciplinary projects and engagement within the professional sector, as well as through the interaction with the local community.

The LdM Gallery closely aides in working towards this goal, creating an efficient space for showcasing interdisciplinary fields of art within the school and collaborating with high-level projects organized in the city of Florence.

The overall mission of the LdM Gallery is to encourage the development of creativity and sophistication within the student body, generate an open dialogue between students and the public, and foster opportunities for students to experience the reality of the art world beyond an institutional setting and gain professional experience through their artwork.

### **LdM Gallery Coordinator:**

Federico Gori, LdM Professor - Department of Painting, Drawing and Mixed Media



@IstitutoLdM @LdMGallery

info@ldminstitute.com  
www.ldminstitute.com

*LdM Gallery is an initiative by Istituto Lorenzo de' Medici*

